



SUPPORTING CHARACTERS

Above: Senior Dani Pitts (Florence) and sophomore Lydia Benesh (Edna) hold up a dress to senior Kaylynn Burgin (Margo). IHSMTA gave special recognition to Burgin for performance in a principal role.

Above Right: Freshman Luke Stephens (Stanford) drives Sophomore Tyler Panos (Billy Cane) and Senior Emrys Yamanishi (ensemble).

Right: Sophomore Milo Olinger (Mayor Dobbs) holds his hand up after his character throws his suitcase off the train. Photos by Abigail Morf.

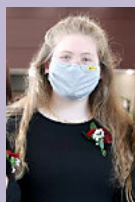


Sophomore Dallas Olberding (Daryl) and Junior Ashlee Elliott (Lucy) pose after singing in the Shiny Penny. Photo by Abigail Morf.

Who was your favorite character?

"I like the way that Lucy is played, I think that Lucy is definitely not how Ashlee actually is and it's really cool watching her step out of her comfort zone."

-Sage McVay '21
(Stage Manager)



"My favorite was Daryl because Dallas fit and portrayed the character wonderfully."

-Ashlee Elliott '22
(Lucy)



"I would probably say Billy. He's an aspiring writer who can be a bit naive, but always sees the bright side of everything!"

Milo Olinger '23
(Mayor Dobbs)



CAST AND CREW: *Front Row:* Hagen Wilkins, Anna Stephens, Isabelle Krapfl, Tessa Baty, Sabrina Bleile, Megan Baumler, Ashlyn Steen, Natalie Clark, Emrys Yamanishi, Claire Gaffney, Mollie Snedden, Luke Stephens, Anna Vavricek. *Row 2:* Audrey Tucker, Sage McVay, Emily Patten, Ella Krob, Brynn Lynner, Lillie Hawker, Alice Conroy, Ben Johnson, Eli Krob, Jacob Cannon, Tyler Panos, Jasper Rood, Brooke Bausch, Kai Yamanishi. *Row 3:* Lillian Bishop, Finley McVay, Ashlee Elliott, Milo Olinger, Kaylynn Burgin, Lydia Benesh, Dani Pitts, Michaela Rowell, Julia Andrews, Leah Kaminsky, Dallas Olberding, Kaleigh Jordan, Lane Gaffney, Margaret Player, Natalie Spinsby, Ranger Hanna. *Back Row:* Kristen Anderson, Elise Rodenberg, Musical Director Thad Wilkins, Aiden Campbell, Nathan Woods, Denis Rodenberg, Sophia Andrews, Ashton Hunt, Michael Briesemeister, Tabitha Rasmussen, Elizabeth Meier-Gast.



The ensemble sings while setting up their picnic table. Photo by Director Tom Stephens.



Jasper Rood (Jimmy Ray) collapses to the floor after his character discovers tragic news about his baby. Photo by Abigail Morf.



Dancers Emrys Yamanishi, Lillie Hawker, Emily Patten, Brynn Lynner and Ella Krob hold lanterns as the pose on stage. Photo by Director Tom Stephens.

Customer is allowed to have objects outside of the margin.

TRIM LINE TRIM LINE

TRIM LINE TRIM LINE



LEADING ROLES

Senior Jasper Rood (Jimmy Ray) dips senior Alice Conroy (Alice Murphy) during dress rehearsal on April 16. IHSMTA awarded Conroy with outstanding performance in principal role and the cast received outstanding ensemble. Photo by Abigail Morf.

BRIGHT STAR: FIRST MUSICAL IN NEW PAC

A Heart-Wrenching Love Story

Story by Abigail Morf

The cast of *Bright Star* brought to life a story of young love, loss, and hope. With unsteadiness in the real world, the show brought an opportunity for community members to immerse themselves into the story.

Director Tom Stephens' program notes explain why he chose *Bright Star*: "Like us, the people in the show find a way to overcome adversity and thrive... it's a little bit of what we need in the world right now."

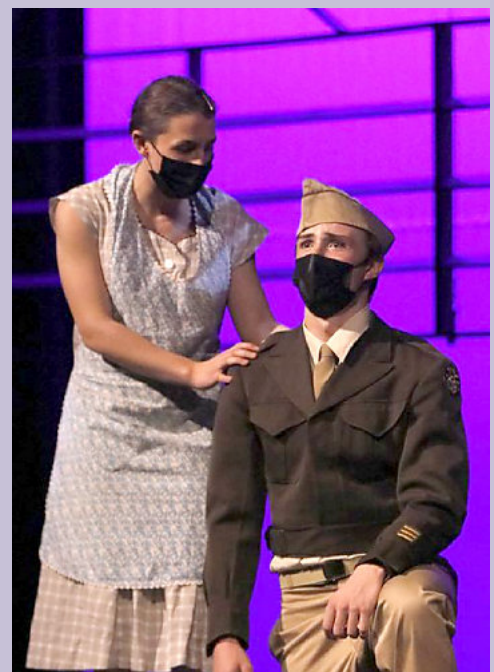
Senior Jasper Rood, who played character Jimmy Rae, tied the rough past year we've had to the Great Depression, when the story takes place. "We need it now just as much as they needed it back then." A sappy love story with a happy ending allows the audience to escape and feel a sense of comfort.

A variety of challenges tested the cast's limits. Wearing masks while acting is not an easy feat. Students had to relearn how to express emotion, sing, and wear microphones, all with masks on. Directors

emphasized the importance of expressing emotion with your eyes, the only facial feature showing. "Trying to put on a good show during a pandemic definitely had it's challenges," said senior Alice Conroy, playing Alice Murphy, "but it was worth it in the end."

This year, cast and crew members had the motivation to push past all barriers. They say distance makes the heart grow fonder, and after last year's musical being cut short that statement speaks volumes. "It taught me to really appreciate the rehearsal process, because I'll never get a chance to do it with the same people," senior Kaylynn Burgin said.

"There's a line in the show where Billy says, 'truth walks beside us like a shadow, and until it marches with us we aren't truly whole,' and I think a lot of people today have something about them that they don't really know," sophomore Tyler Panos said of his character. This line was written to spark an idea in the audience to really think about themselves, and hopefully leave feeling more fulfilled than when they came in.



Junior Ashlyn Steen (Mama Cane) comforts sophomore Tyler Panos (Billy Cane) as his character mourns his father's death. Photo by Remy Merrill.

TRIM LINE

Customer is allowed to have objects outside of the margin.

TRIM LINE TRIM LINE