

"It is very popular this year. I've seen it in the halls a million times."

—Avery Kout '16

GRAY

matters

Robust. Zesty. Colorful. Those may not be the exact words that come to mind when the color gray is mentioned, but students have a few reasons why gray should be considered the new black.

"Gray is actually a very convenient color," Quentin Biderman '16 said. "It's one of those colors where you can just have the entire outfit the same color without being stared at."

Timeless, gray has appeared everywhere from the big screen to iPhone screens. It doesn't go unnoticed.

"I've actually never realized how popular the color gray is until recently," Kendra Law '16 said. "I saw a girl with amazing gray hair on Instagram the other day."

From a psychology perspective, gray's the color of compromise, being neither black nor white. Fashionistas might rank gray along with its wear-with-anything neutral competitors.

"I feel like everyone says that black and white go with everything, but I think that gray should be up there with them," Rachel Hoefft '18 said.

Compared to vibrant colors, such as red or yellow, gray has the ability to conform to one's outfit, being both conventional and dependable.

"Going through my closet the other day [I] realized that gray is the perfect color to look simple in yet accessorize with," Emma Christison '16 said.

All in all, gray can be worn on gloomy days or bright, offering a sense of calmness amid the chaos of color.

"The world's full of gray," Eric Millers '15 said. "Why not use it to express yourself?"

—By Nisha Coney



2



3



4



1



5



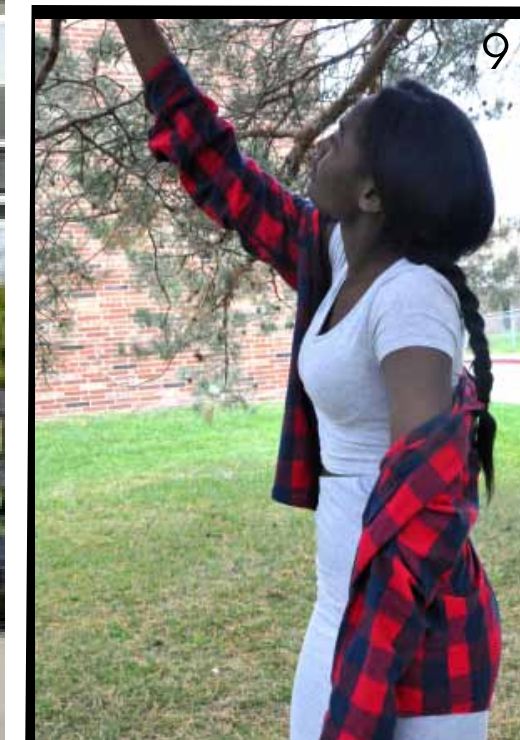
7



6



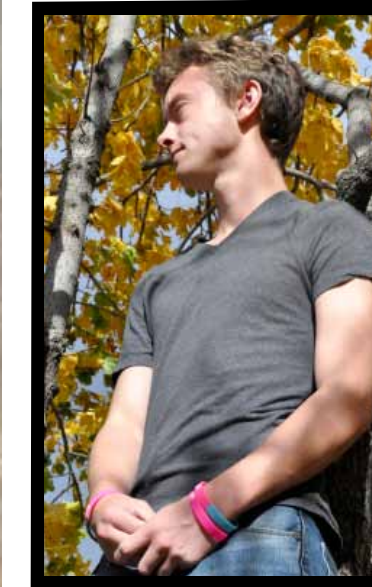
8



9



ALL PHOTOS BY NISHA CONEY



Tree climbing, Zach Logsdon '17 reveals a neutral look with a plain gray tee Oct. 26.

Decked out in gray, Taylor West '16 showcases her gray styling at lunch Oct. 15.

1. **Piggy-backs and playful smiles.** Tannor McDonald '16 and Kenzie Greiner '16 wear gray in opposite ways. "I wear gray when I don't know what else to put on," Greiner said. "It's such a neutral color."

2. **Going simple.** Spencer Meacham '16 sports a gray shirt and spotted snapback. "Gray is a quality color," he said. "It's not hard to style, and I can look classy with ease."

3. **With a hint of gray** in her outerwear, Emma Christison '16 and Ricky Rodriguez '16 make after-school plans during lunch Oct. 27. "I really like the color gray," Christison said. "I can easily accessorize with it."

4. **Pre-play practice.** Kate Vander Leest '17 spends some time alone before a rehearsal for "Little Women" on Oct. 27. "Gray is such a fun color to me," Vander Leest said. "It makes me use my imagination."

5. **Lunchtime!** Eric Millers '15 goes gray with simplicity. "Gray is one of my favorite colors, because it goes with everything," he said. "If you wear a groufit, nobody cares."

6. **With a peek of gray** in her outfit, Alexa Oleson '16 enjoys the fall colors of changing trees. "I ripped a hole in this sweater when I was rollerblading and tried to sew it back together," Oleson said. "But it's still my favorite."

7. **Cupcakes and casualty.** Camille Anderson '16 waits for friends outside before Yarn Club. "Gray is such a classy color," Anderson said.

8. **After school hangout.** Rachel Hoefft '18 and Belle Parker '18 chat with friends after school. "Gray is the most current color," Parker said. "It's very simple and chic."

9. **Gray with a pop.** Asia Blanch '17 waits outside for her boyfriend during lunch Oct. 15. "Gray makes things look chill and cool, just like me," Blanch said.

Gray 013

012 Student Life

9 COLOR Run Prepare for Submission for Color ID information.

LCID: SF Mixed Berries

LMCID: N/A

Names of tagged colors should appear in this box.

Page No. 12 (even pages)

Edge of page is the inside edge of gray border. Bleed elements should extend to outside edge of gray border. School name and job number should be entered on the master pages.

PROCESS CMYK

Page No. 13 (odd pages)

9 COLOR Run Prepare for Submission for Color ID information.

RCID: SF Mixed Berries

RMCID: N/A

Names of tagged colors should appear in this box.

Edge of page is the inside edge of gray border. Bleed elements should extend to outside edge of gray border. School name and job number should be entered on the master pages.

PROCESS CMYK